



ΠΑΓΚΥΠΡΙΟ ΙΑΤΡΙΚΟ ΣΥΛΛΟΓΟΣ  
CYPRUS MEDICAL ASSOCIATION



ISHNE International Society for Holter  
& Noninvasive Electrocardiology



ΕΛΛΗΝΙΚΗ ΚΑΡΔΙΟΛΟΓΙΚΗ ΕΤΑΙΡΕΙΑ  
HELLENIC CARDIOLOGICAL SOCIETY

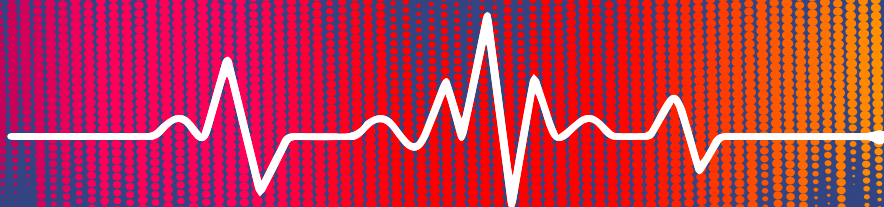


INTERNATIONAL SOCIETY  
OF ELECTROCARDIOLOGY

# International Congress on Electrocardiology 2025 ISHNE & ISE

## May 30 - June 1 / 2025

Electra Palace / Thessaloniki, Greece



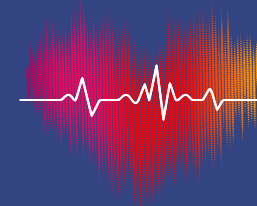
Under the auspices:



HELLENIC REPUBLIC  
Ministry of Education Religious Affairs  
and Sports

[www.ishne2025.frei.gr](http://www.ishne2025.frei.gr)

PROGRAMME



## International Congress on Electrocardiology 2025 ISHNE & ISE

May 30 - June 1 / 2025  
Electra Palace / Thessaloniki, Greece



P R O G R A M M E

## WELCOME LETTER

Dear Colleagues,

On behalf of the organizing committee, we are pleased to welcome you to the 50th International Congress on Electrocardiology on May 30-June 1st 2025 at the historic city of Thessaloniki, Greece, jointly organized by ISHNE and ISE, in association with the Hellenic Society of Cardiology and the Cyprus Medical association.

The scientific program has been meticulously designed to blend state-of-the-art advancements with hands-on education, and will host an exceptional gathering of world-renowned experts in electrocardiology, electrophysiology, cardiogenetics, alongside with pioneers in novel technologies and digital health. Additionally there is an abstract competition, where accepted abstracts will be published in the Journal of Electrocardiology and a Young investigator Award will be conferred.

For younger cardiologists, we offer an ECG and pacemaker masterclass. Additionally, ISHNE Young will host a mentorship roundtable, fostering dialogue between emerging talents and esteemed leaders in the field, and a psychological empowerment and resilience workshop aiming to equip young and older colleagues with tools to navigate adversity, manage stress, and build resilience in their daily clinical lives.

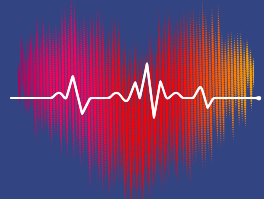
We hope that this Congress will be a memorable and enriching experience for all attendees.

Warm regards



**Vassilios Vassilikos**

Professor of Cardiology, Aristotle University of Thessaloniki  
President ISHNE  
Congress Chair, International Congress on Electrocardiology 2025

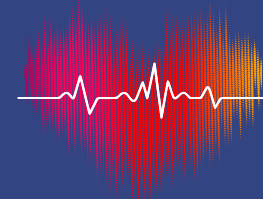


## International Congress on Electrophysiology 2025 ISHNE & ISE

May 30 - June 1 / 2025  
Electra Palace / Thessaloniki, Greece



P R O G R A M M E



## International Congress on Electrophysiology 2025 ISHNE & ISE

May 30 - June 1 / 2025  
Electra Palace / Thessaloniki, Greece



P R O G R A M M E

## INFORMATION

### Venue

Electra Palace Thessaloniki

Address: Aristotélous 9, Thessaloniki 546 24

### Certificate

CME Credits

The "International Congress on Electrophysiology", at Electra Hotel, Thessaloniki, Greece, 30/05/2025-01/06/2025 has been accredited by the European Accreditation Council for Continuing Medical Education (EACCME) 17,5 European CME credits (ECMEC@s).

Each participant can only receive the number of credits he/she is entitled to according to his/her actual participation at the event once he/she has completed the feedback form.

### Website

<https://ishne2025.frei.gr/>

### Contact us

[ishne2025@frei.gr](mailto:ishne2025@frei.gr)

### CONGRESS APPLICATION "ISHNE 2025"

Android

iOS



### ORGANIZERS



P.C.O.  
FREI s.A.  
Congress Organiser – Virtual Events – Corp. – Meetings/Events – DMC  
3, Paparigopoulou Str., 105 61 Athens, Greece  
T: +30 210 3215600, Fax: +30 210 3219296  
[www.frei.gr](http://www.frei.gr) • email: [info2025@frei.gr](mailto:info2025@frei.gr)

## ORGANISING COMMITTEE



### Vassilios Vassilikos

Professor of Cardiology  
3rd Cardiology  
Department  
School of Medicine  
Aristotle University of  
Thessaloniki Greece



### Pyotr Platonov

Professor of Cardiology  
Department of Cardiology,  
Clinical Sciences  
Lund University  
President of the  
International Society of  
Electrocardiology



### Konstantinos Toutouzas

Professor of Cardiology  
National and  
Kapodistrian University of  
Athens  
President of Hellenic  
Society of Cardiology  
Council for Cardiology  
Practice Chairperson-ESC



### Petros Agathagelou

Clinical Associate  
Professor of Cardiology  
European University  
Cyprus  
Cyprus Medical  
Association President

### ISHNE Board

President: **Vassilios Vassilikos**

President-Elect: **Adrian Baranchuk**

Vice President: **Manlio F. Márquez**

Immediate Past President: **Takanori Ikeda**

Treasurer: **Rod Passman**

Secretary: **Richard L. Verrier**

### ISE Board

President: **Pyotr Platonov**

Past President: **Bulent Gorenek**

President-Elect: **Emanuela T. Locati**

Secretary: **Gary Tse**

Treasurer: **Peter Macfarlane**

### Hellenic Cardiological Society Board

President: **Konstantinos Toutouzas**

Vice-President: **Michalis Lampros**

Past President: **Georgios Kohniadakis**

Secretary General: **Athanasios Trikas**

Treasurer: **Loukianos Rallidis**

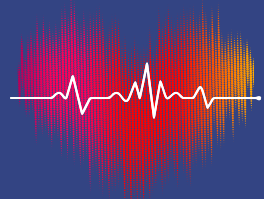
### Cyprus Medical Association Board

President: **Agathagelou Petros**

Vice-President: **Chrysanthos Georgiou**

Secretary: **Michalis Anastasiadis**

Treasurer: **Angelos Stylianou**



## FRIDAY 30 MAY 2025

### Room 1

08:45-09:00 Welcome Address (**V. Vassilikos**)

09:00-10:00 **Digital Literacy and AI Algorithms**

Chairs: **A. Aletras, I. Chouvarda**

Speakers: **Ng Jeremy Y - online** Attitudes and perceptions of medical researchers towards the use of artificial intelligence chatbots in the scientific process: An international cross-sectional survey"

**C. Bakogiannis** AI-Enhanced Tools in Scientific Publications

**E. Kalampokis** Bias and Fairness in AI Algorithms

Panelists: **C. Chrysochoou - online, D. Christou-Varsakelis**

10:00-11:00 **Sports Cardiology and Pre-Participation Screening**

Chairs: **E. Piotrowicz, A. Anastasakis**

Topics: European vs USA recommendations for pre-participation screening

Effect size of screening on SCD prevention

Physical activity recommendations in patients with cardiomyopathies or chanellopathies and ICDs

Panelists: **J. Tfelt-Hansen - online, E. Pagourelas, G. Efthymiadis, P. Platonov, K. Toutouzas, H. Mavrakis**

11:00-11:15 COFFEE BREAK

11:15-11:45 **Lecture**

Chairs: **G. Kochiadakis, T. Maounis - online**

Speaker: **T. Pang** The Epileptic Heart and Sudden Cardiac Death

## FRIDAY 30 MAY 2025

### Room 2

09:00-10:00 **Novel Pacing and ICD techniques: Essential things to know**

Chairs: **K. Gatzoulis, N. Fragakis**

Speakers: **M. Márquez** The anatomy of the AV node and the conduction system

**K. Kaczmarek - online** Conduction system pacing: Insights from clinical practice

**G. Leventopoulos** Exploring QRS area beyond patient selection in CRT- can it guide left ventricular lead placement?

Panelist: **E. Simantirakis**

10:00-11:00 **The Era of Personalized Medicine - Behavioral Change and New Technologies**

Chairs: **A. Ribeiro, C. Bakogiannis**

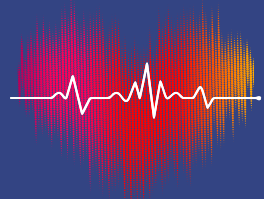
Speakers: **N. MS de Groot** The Role of mHealth in Promoting Behavioral Change for Cardiovascular Health

**L. Rosman** Leveraging long-term physical activity data obtained from implanted devices to assess and promote lifestyle changes

**C. Karamanidou** Patient Empowerment

COFFEE BREAK



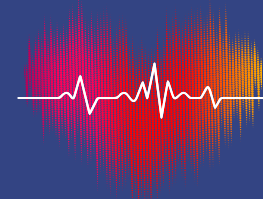


# International Congress on Electrocardiology 2025 ISHNE & ISE

May 30 - June 1 / 2025  
Electra Palace / Thessaloniki, Greece



## PROGRAMME



# International Congress on Electrocardiology 2025 ISHNE & ISE

May 30 - June 1 / 2025  
Electra Palace / Thessaloniki, Greece



## PROGRAMME

### FRIDAY 30 MAY 2025

#### Room 1

11:45-13:00	<b>EXPERTS FORUM: Neurocardiology- Autonomic substrate and interventions</b>	
Chairs:	<b>K. Yiangou, K. Letsas</b>	
Speakers:	<b>T. Klingenheben</b>	Autonomic nervous system and the Heart
	<b>P. Macfarlane</b>	AI based ECG prediction of non-ECG diagnoses, including syncope
	<b>S. Stavrakis</b>	POTS: Does it exist?
	<b>S. Psychari - online</b>	Sleep apnea and related arrhythmias

13:00-14:00	<b>ECG Masterclass</b>
	<b>A. Baranchuk, J. Streeter, G. Giannopoulos, A. Antoniadis</b>

15:00-16:00	<b>What happened to COVID Patients 4 years post-pandemic</b>	
Chairs:	<b>I. Kanakakis, P. Vardas</b>	
Speakers:	<b>E. Pagourelas</b>	Myocardial involvement after COVID19 infection: Any news two years later?
	<b>R. Gopinathannair</b>	Cardiac Arrhythmias and Autonomic Dysfunction Associated With COVID-19

16:00-16:30	<b>Lecture</b>	
Chairs:	<b>M. Márquez, Chen L. Y.</b>	
Speaker:	<b>A. Oto</b>	Renal sympathetic denervation in arrhythmia control

16:30-17:00 COFFEE BREAK

### FRIDAY 30 MAY 2025

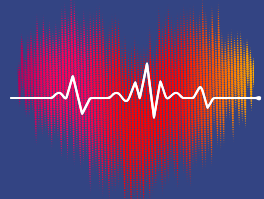
#### Room 2

11:45-13:00	<b>EXPERTS FORUM: Hot topics in Cardiology in collaboration with AENIT</b>	
Chairs:	<b>E. Simantirakis, S. Konstantinides</b>	
Speakers:	<b>R. Passman</b>	Has the time come for piil in the pocket anticoagulation in AF?
	<b>L.Y. Chen</b>	Multimodal data integration to predict atrial fibrillation
	<b>E. Piotrowicz</b>	Arrhythmias in women

13:00-14:30	<b>ISE Young Investigators Award Competition</b>	
Chairs:	<b>P. Dorostkar, P. Platonov, V. Vassilikos</b>	
Speakers:	<b>Boroumand Zeidaabadi</b>	4579   Deep Learning ECG Image Platform for Cardiac Diagnosis and Risk Stratification
	<b>Georgios Petmezas</b>	4610   Optimizing Atrial Fibrillation Detection through Hybrid ECG-Based Feature Selection Using Extremely Randomized Trees and Non-Linear Correlation Measures
	<b>Konstantinos Patlatzoglou</b>	4624   A Novel Variational Autoencoder Framework for Explainable AI-ECG
	<b>Michail Botis</b>	4678   Machine Learning -Guided Differentiation of RVOT and LVOT Arrhythmias

15:00-16:00	<b>Panel Discussion: New therapies, innovations and lifestyle interventions in Atrial fibrillation</b>	
Moderators:	<b>S. Boveda, M. Efremidis</b>	
Topics:	Tools for AF prediction	
	New interventional therapies	
	Control of modifiable factors	
Panelists:	<b>K. Neven, L. Mantziari, G. Andrikopoulos, M. Kurpesa, D. Tsiachris, N. Varma</b>	

16:00-17:00 **ISE Council Meeting**



International Congress  
on Electrocardiology 2025  
ISHNE & ISE

May 30 - June 1 / 2025  
Electra Palace / Thessaloniki, Greece



P R O G R A M M E



International Congress  
on Electrocardiology 2025  
ISHNE & ISE

May 30 - June 1 / 2025  
Electra Palace / Thessaloniki, Greece



P R O G R A M M E

FRIDAY 30 MAY 2025

Room 1

17:00-18:15	<b>Atrial Fibrillation: Hot Topics</b>	
Chairs:	<b>S. Tzeis, T. Ikeda</b>	
Speakers:	<b>Y. Huo</b>	Atrial Cardiomyopathy: A Marker of AF Risk?
	<b>L. Johnson</b>	Early Detection of AF in the Digital Era
	<b>T. Sasano</b>	Embryological Classification of Arrhythmogenic Triggers Initiating Atrial Fibrillation
	<b>T. Potpara</b>	Challenges in AF Guideline implementation
Panelists:	<b>P. Ioannidis, D. Tsiachris</b>	

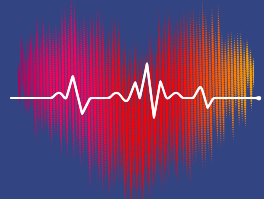
18:15-18:45	<b>ISHNE Stern Lecture</b>	
Chairs:	<b>V. Vassilikos, A. Baranchuk</b>	
Speaker:	<b>N. Trayanova</b>	The use of computational modeling and artificial intelligence to uncover arrhythmogenic mechanisms and advance arrhythmia management.

18:45-19:30 **Opening ceremony**

FRIDAY 30 MAY 2025

Room 2

17:00-18:15	<b>Best Abstracts Oral Presentation</b>	
Chairs:	<b>G. Giannopoulos, A. Antoniadis</b>	
	<b>Antonio Luiz Ribeiro</b>	4607   AI-ECG for Normal ECG Detection in a Large-Scale Telehealth Network
	<b>Abhishek Deshmukh</b>	4565   Pre-Implant AI-ECG Age as a Predictor of Survival Following Cardiac Resynchronization Therapy
	<b>Evangelia Myrovali</b>	4598   Detection of paroxysmal atrial fibrillation during sinus rhythm using P-wave loop vectorcardiographic indices
	<b>Fenella Downes</b>	4600   Deep Learning Predicts Myocardial Infarction Incidence from Multiple ECG Features
	<b>Gary Tse</b>	4614   PowerECG: A Portable and Versatile ECG Analysis Platform for Rapid Cardiac Screening
	<b>Constantinos Bakogiannis</b>	4682   Artificial intelligence-enabled sinus electrocardiograms for the detection of paroxysmal atrial fibrillation benchmarked against the CHARGE-AF score



International Congress  
on Electrophysiology 2025  
ISHNE & ISE

May 30 - June 1 / 2025  
Electra Palace / Thessaloniki, Greece



P R O G R A M M E



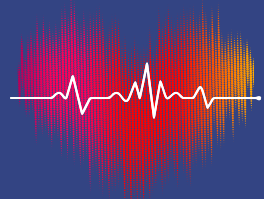
International Congress  
on Electrophysiology 2025  
ISHNE & ISE

May 30 - June 1 / 2025  
Electra Palace / Thessaloniki, Greece



P R O G R A M M E

SATURDAY 31 MAY 2025			SATURDAY 31 MAY 2025		
Room 1			Room 2		
08:00-09:00	ISHNE BOT Meeting				
09:00-10:30	Panel Discussion: ISHNE Young: Learning from the Legends/ Pioneers		09:00-10:30	Patient Literacy and the Role of Digital Health	
	Moderators:	W. Zareba, R. Sutton		Chairs:	S. Johnston, P. Dilaveris
	Topics	What makes a standout fellow Crafting a winning CV Burnout and how to prevent in a competitive era Research vs. clinical practice: striking the balance Academia or Industry		Speakers:	A. Kontogeorgis Shared Decision Making in Cardiac Electrophysiology Procedures and Arrhythmia Management
	Speaker	L. Michalis Post Certification Training in Cardiology			P. Bamidis Enhancing Patient Understanding of Cardiovascular Conditions Using Digital Tools
	Special Commentator	N. Papaioannou / Ministry of Education			D. Farmakis - Thessaloniki Patient-Centered AI: Bridging the Knowledge Gap Between Patients and Providers
	Panelists:	M. Krantz, L. Michalis, R. Passman, R. Sutton, G. Andrikopoulos, I. Patrikios, I. Skoularigis, V. Vassilikos, P. Platonov, G. Tse			A. Deshmukh The future of the digital integrated cardiovascular care, the physician's perspective
10:30-10:45	COFFEE BREAK			COFFEE BREAK	
10:45-11:45	Genetics for the Electrophysiologist		10:45-11:45	Cardio-Oncology and Arrhythmias	
	Chairs:	G. Giannakoulas, M. Aivaliotis		Chairs:	C. Papadopoulos, B. Gorenek, G. Filippatos - online
	Speakers:	L. Makarov The new ECG pattern in long-QT E. Zaklyazminskaya Clinical, genetic and surgical aspects of HCM without LVOT obstruction A. Anastasakis HCM/ SCD and genetics in the Greek population E. Locati Atrial fibrillation is a hereditary disease: fact or fiction?		Speakers:	D. Farmakis-Athens - online Arrhythmias in Cardio-Oncology: Current Understanding M. Krantz CardioOncology: the growing burden of arrhythmic and cardio toxicity events T. Ikeda Active Cancer and Atrial Fibrillation
11:45-12:15	Lecture				
	Chairs:	K. Toutouzas, D. Cokkinos			
	Speaker:	N. Takahashi Epicardial Adipose Tissue and Atrial Fibrillation			
12:15-12:30	COFFEE BREAK			COFFEE BREAK	



# International Congress on Electrocardiology 2025 ISHNE & ISE

May 30 - June 1 / 2025  
Electra Palace / Thessaloniki, Greece



P R O G R A M M E



# International Congress on Electrocardiology 2025 ISHNE & ISE

May 30 - June 1 / 2025  
Electra Palace / Thessaloniki, Greece



P R O G R A M M E

## SATURDAY 31 MAY 2025

### Room 1

12:30-13:30 **Debate Session: Remote Monitoring for Arrhythmias: are wearables replacing loop monitors**

Chairs: **R. Passman, A. Ziakas, R. Piotrowicz**

Speakers: **T. Jadczyk** Pro  
**E. Locati** Con

Panelists: **N. Varma, N. Maglaveras**

13:30-14:30 **Satellite Symposium**

supported by

14:30-15:30 **ISHNE General Assembly**

15:30-16:30 **Meet the experts: Non-invasive risk stratification for ICD - Syncope**

Chairs: **I. Zarifis, E. Locati**

Speakers: **I. Cygankiewicz** ECG-Derived Indices for Post-MI SCD Risk Stratification: Have we Run out of Steam?

**K. Gatzoulis** Risk-Stratification in Non-Ischemic Cardiomyopathy: Are we finally treading beyond LVEF?

**W. Zareba** Implantable Cardioverter-Defibrillators: Do we Implant too few or too many?

**B. Milovanovic** Postinfection syndromes and syncope - new approach in diagnosis and treatment

Panelist: **G. Stavropoulos**

## SATURDAY 31 MAY 2025

### Room 2

12:30-13:30 **Arrhythmias and cognitive function**

Chairs: **K. Tsioufis, N. Grigoriadis**

Speakers: **M. Márquez** Atrial fibrillation and cognitive deterioration  
**E. Svennberg - online** How can we predict AF and modify its related complications?  
**K. Triantafyllou** Risks of developing cognitive dysfunction after invasive procedures  
**T. Karapanayiotides** When Cardiologists and Neurologists Should Collaborate

Panelist: **A. Tzikas**

13:30-14:30 **Pacemaker Masterclass**

Chairs: **Y. Birnbaum, A. Antoniadis, K. Polymeropoulos**

15:30-16:30 **WSA/ISHNE joint session: New developments in diagnosis and management of Vasovagal syncope, Postural orthostatic tachycardia and Inappropriate sinus tachycardia**

Chairs: **A. Oto, E. Crystal**

Speakers: **O. Oseroff** Practicalities of 24hABPM and definitions of the cardiac autonomic conditions, Vasovagal syncope, Postural Orthostatic Tachycardia and Inappropriate Sinus Tachycardia

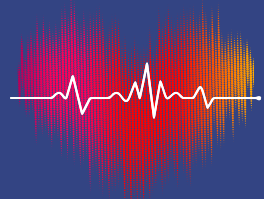
**R. Sutton** Low blood pressure phenotype: Importance in reflex syncope

**R. Sutton** 24hABPM in vasovagal syncope

**M. Juszczak** Postural Orthostatic Tachycardia Syndrome and Inappropriate Sinus Tachycardia-Two Distinct Phenotypes in Post-COVID-19 Cardiovascular Dysautonomia: Prevalence, Overall and Clinical Characteristics

Panelists: **A. Oto, E. Crystal, R. Sutton**



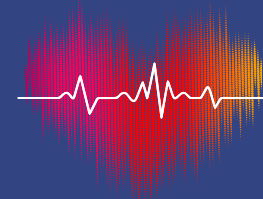


**International Congress  
on Electrophysiology 2025  
ISHNE & ISE**

**May 30 - June 1 / 2025**  
Electra Palace / Thessaloniki, Greece



P R O G R A M M E



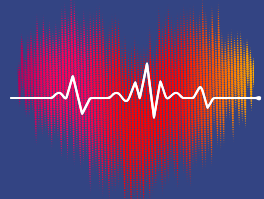
**International Congress  
on Electrophysiology 2025  
ISHNE & ISE**

**May 30 - June 1 / 2025**  
Electra Palace / Thessaloniki, Greece



P R O G R A M M E

SATURDAY 31 MAY 2025		SATURDAY 31 MAY 2025	
Room 1		Room 2	
16:30-17:00	COFFEE BREAK	16:00-17:00	ISE General assembly (ROOM 3)
17:00-18:30	<b>Panel Discussion: Regional Differences in the utilization of modern technology</b> <i>Chairs:</i> <b>W. Zareba, P. Vardas</b> <i>Topics</i> America vs Europe Effect of different health systems Utilization of new technology resources in various regions Factors restricting access to life-prolonging treatments <i>Panelists:</i> <b>P. Macfarlane, A. Ribeiro, L. Tereshchenko - online, V. Vassilikos, T. Ikeda, P. Agathangelou, I. Styliadis</b>	17:00-18:30	<b>ISE/ISHNE Joint session: The ECG in Various Clinical Conditions</b> <i>Chairs:</i> <b>P. Platonov, G. Tse</b> <i>Speakers:</i> <b>D. Tachmatzidis</b> The P-Wave in AF Prediction: What We Know So Far <b>N. Varma</b> How universal is the QRS of LBBB - Should it be adjudicated differently for women and Asians considered for CRT and LBBAP? <b>P. Dorostkar</b> Pediatric Triggered Rhythms in the Cardiac ICU <b>S. Johnston</b> ECGs and Convolutional Neural Networks
18:30-19:00	<b>Lecture</b> <i>Chairs:</i> <b>V. Vassilikos, A. Baranchuk</b> <i>Speaker:</i> <b>M. Chung</b> Tackling Sudden Cardiac Arrest: A Challenge for ISHNE and ISE		
19:00-19:30	<b>AWARD CEREMONY</b>		



International Congress  
on Electrophysiology 2025  
ISHNE & ISE

May 30 - June 1 / 2025  
Electra Palace / Thessaloniki, Greece



P R O G R A M M E



International Congress  
on Electrophysiology 2025  
ISHNE & ISE

May 30 - June 1 / 2025  
Electra Palace / Thessaloniki, Greece



P R O G R A M M E

SUNDAY 1 JUNE 2025

Room 1

09:30-11:10	ISHNE Young/ HCS Young/ SSHM AUTH in collaboration with EHRA Young EP:Espresso & Resilience: Brewing strength for the Cardiologist's Heart
Chairs:	<b>V. Vassilikos, M. Marketou - online</b>
09.30-10.00	Welcome Breakfast & Espresso Masterclass: The Science & Art of Espresso: First Barista Seminar
10.00-10.40	Brewing Conversations: Stories from the Heart Title: "Bitter Shots, Sweet Lessons: Real Stories from Cardiologists" Description: 8-10 young cardiologists from various countries will share personal, authentic stories about daily anxiety, burnout, and the emotional toll of clinical practice. The format will be dynamic, with each speaker having 4-5 minutes to present a snapshot of their experience, followed by brief reflections from the audience.
Moderators:	<b>S. Theodorou, C. Bakogiannis</b>
Panelists:	<b>I. Kachrimanidis, A. Boulmpou, A. Tsarouchas, A. Arvanitaki, T. Jadczyk, I. Doundoulakis, K. Triantafyllou, M. Kousta</b>
10.40-11.10	Stirring Resilience: Lessons from Psychology Mind Over Matter: Strategies for Burnout & Anxiety Management
Moderator:	<b>C. Bakogiannis</b>
Speaker:	<b>S. Theodorou</b>

11:10-11:30 Closing remarks

SUNDAY 1 JUNE 2025

Room 2

09:30-11:10	Joint session HCS - Cyprus Medical Association
Chairs:	<b>D. Alexopoulos, A. Mavrogianni</b>
Speakers:	<b>P. Kourtellaris</b> TAVI and conduction abnormalities
	<b>Th. Christophides</b> CRT experience in Cyprus
	<b>S. Tzikas</b> Anticoagulants and invasive procedures in Cardiology: Where do we stand?
	<b>D. Konstantinou</b> My follow-up routine after a CRT implantation
	<b>E. Hatzinikolaou - Kotsakou</b> My clinical approach to a patient with a Brugada type ECG
Panelist:	<b>S. Pastromas</b>



International Congress  
on Electrophysiology 2025  
ISHNE & ISE

May 30 - June 1 / 2025  
Electra Palace / Thessaloniki, Greece



P R O G R A M M E

## SATELLITE SYMPOSIA

**SATURDAY 31 MAY 2025**

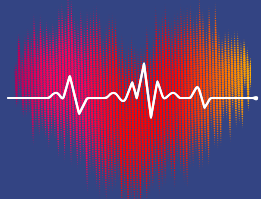
**Room 1**

13:30-14:30	<i>Chairs:</i>	<b>V. Vassilikos</b>
	<b>G. Andrikopoulos</b>	Electroanatomic mapping and Pulsed Field Ablation with Faraview. Mapping the Future of Atrial Fibrillation Ablation

supported by 



## FACULTY LIST



## International Congress on Electrocardiology 2025 ISHNE & ISE

May 30 - June 1 / 2025  
Electra Palace / Thessaloniki, Greece



### PROGRAMME

## FACULTY LIST

**Agathangelou Petros**, BSC (Hum.Phys.) MD (Hons-USA) FESC FACC FAHA FHFA  
Cardiologist  
President of the Cyprus Medical Association

**Aivaliotis Michalis**, MSc, PhD  
Associate Professor of Biochemistry, Laboratory of Biological Chemistry, Faculty of Health Sciences, School of Medicine, Aristotle University of Thessaloniki

**Aletras Anthony**,  
Professor of Biomedicine and Imaging Technologies, School of Medicine, Aristotle University of Thessaloniki

**Alexopoulos Dimitrios**  
Emeritus Professor in Cardiology

**Anastasakis Aristidis**, MD, PhD  
Coordinator of the National Medical Accuracy Network  
Cardiologist Scientific Officer  
Scientific Director of the Hereditary and Rare Cardiovascular Diseases Unit  
Deputy Director of the Cardiology Department  
Onassis Heart Surgery Centre

**Andrikopoulos Georgios**, MD, PhD, FESC,  
Director 1st Cardiology /Electrophysiology and Pacing dept, Henry Dunant Hospital, Athens, Greece

**Antoniadis Antonios**, MD, MSc, PhD  
Associate Professor of Cardiology  
Second Cardiology Department  
Hippokrateion General Hospital  
Aristotle University of Thessaloniki, Greece

**Arvanitaki Alexandra**, MD, MSc, PhD  
Clinical Reader in Cardiology, 2nd Cardiology Department, Aristotle University of Thessaloniki  
School of Medicine (AUSoM)/ Clinical and Research Fellow in Pulmonary Hypertension and Adult Congenital Heart Disease, Royal Brompton Hospital, London, UK

**Bakogiannis Constantinos**, MD  
Hippokration General Hospital of Thessaloniki,  
World Society of Arrhythmias

**Bamidis Panagiotis**  
Prof. of Medical Physics, Medical Informatics, Medical Education  
Director, Lab of Medical Physics and Digital Innovation Lead, Medical Education Innovation & Research Unit, Special Unit for Biomedical Research and Education  
Director, MSc Biomedical Engineering (BME-AUTH)  
School of Medicine, Aristotle University of Thessaloniki

**Baranchuk Adrian**, MD FACC FRCPC FCCS FSIAC  
Professor of Medicine, Queen's University  
Editor-in-Chief, Journal of Electrocardiology  
President Elect, International Society of Electrocardiology (ISHNE)  
President, Interamerican Society of Cardiology (SIAC)

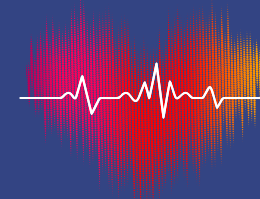
**Birnbaum Yochai**, MD  
Professor of Medicine, Department of Medicine, Section of Cardiology, Baylor College of Medicine, Houston, USA

**Boveda Serge**, MD, PhD, FESC - FEHRA  
Head of the Heart Rhythm Management Department at Clinique Pasteur, Toulouse, France  
Paris University, INSERM U970, Paris, France  
Guest Professor at Brussels University VUB, Brussels, Belgium  
EHRA Secretary (2024-2026)

**Boulmpou Aristi**, MD, PhD  
Cardiologist, Third Department of Cardiology AUTH, Ippokratio General Hospital of Thessaloniki

**Chen Lin Yee**, MD, MS  
Director, Lillehei Heart Institute, Fred C. and Katherine B. Andersen Foundation Chair in Adult Cardiology, Professor of Medicine (Cardiovascular Division), University of Minnesota Medical School

**Chouvarda Ioanna**  
Associate Professor in Medical Informatics and Biomedical Data Analysis, Lab of Computing, Medical Informatics and Biomedical-Imaging Technologies, School of Medicine, Aristotle University of Thessaloniki, GR



## International Congress on Electrocardiology 2025 ISHNE & ISE

May 30 - June 1 / 2025  
Electra Palace / Thessaloniki, Greece



### PROGRAMME

**Christophides Theodoros**  
Dr. Cardiologist-Electrophysiologist, Nicosia General Hospital

**Christou-Varsakelis Dimitrios**  
Professor, Department of Applied Informatics  
University of Makedonia

**Chrysochoou Christina**  
Ass. Professor, University of Athens, Director, 1st Cardiology Clinic University of Ippokrateion Hospital, Athens, Greece

**Chung Mina**, MD, FHRS, FACC, FAHA, ISHNE-F  
President, Heart Rhythm Society  
Professor of Medicine, Cleveland Clinic Lerner College of Medicine of Case Western Reserve University  
Staff, Department of Cardiovascular Medicine, Heart, Vascular & Thoracic Institute  
Department of Cardiovascular and Metabolic Sciences, Lerner Research Institute  
Cleveland Clinic

**Cokkinos Dennis**  
Emeritus Professor of Cardiology University of Athens  
Scientific Associate Biomedical Research Foundation Academy of Athens

**Crystal Eugene**, MD FRCPC  
Professor of Medicine, University of Toronto, World Society of Arrhythmias

**Cygankiewicz Iwona**,  
Prof. dr hab.med. Clinic of Electrocardiology  
Department of Interventional Cardiology and Electrotherapy Medical University of Lodz Regional Center for Heart Diseases - dr Seweryn Sterling  
CLINICAL AND EDUCATIONAL CENTER

**de Groot Natasja MS**,  
Professor in Cardiology-Electrophysiology, Erasmus MC  
Professor in Translational Electrophysiology, EEMCS, Delft University of Technology  
Medical Delta Professor  
Chief Research Unit Electrophysiology  
Co-Director Low Lands Institute for BioElectric Medicine  
P.I. Medical Delta Heart Rhythm Center  
Founder Atrial Fibrillation Innovation Platform

**Deshmukh Abhishek**,  
Associate Professor of Medicine  
Consultant Cardiac Electrophysiologist

**Dilaveris Polychronis**, MD, PhD, FESC, FEHRA  
Ass. Professor of Cardiology, 3rd Department of Cardiology, National & Kapodistrian University of Athens Medical School, Sotiria  
Chest Disease Hospital, Athens, Greece

**Dorostkar Parvln**, MD, MS, EMBA  
Associate Professor of Pediatrics, Louisiana State University

**Doundoulakis Ioannis**, MD, MSc(Res), PhD, FEHRA  
Heart Rhythm Research Brussels, UZ Brussels, Belgium  
Young EP National Ambassador for EHRA

**Efremidis Michalis**, MD, PhD  
Director, Cardiology Unit and Electrophysiology Department, "Onaseio", Athens, Greece, World Society of Arrhythmias

**Efthymiadis George**,  
Professor, 1st Cardiology Clininc, Aristotle University of Athens, Greece

**Farmakis Dimitrios** Athens, MD, PhD, FESC, FHFA  
Ass. Professor of Cardiology , National & Kapodistrian University of Athens Medical School, Liaison Officer, ESC Cardio-Oncology Council

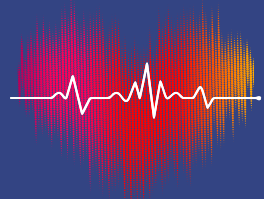
**Farmakis Dimitrios** Thessaloniki  
Director, Cardiology Clinic, General Hospital "Papageorgiou"

**Filippatos Gerasimos**, MD, DrHC, FESC, FHFA, FHFA (hc)  
Professor, Chair of the Department of Cardiology and the Director of the Heart Failure and Cardioncology Units at Athens University Hospital Attikon, Greece

**Fragakis Nikolaos**  
Professor of Cardiology  
Director of 2nd Department of Cardiology, Hippokrateion GH Thessaloniki, Aristotle University Medical School, World Society of Arrhythmias

**Gatzoulis Konstantinos**  
Professor of Cardiology, University of Athens (EKPA)  
Director of EP Lab, Hippokrateion General Hospital, Athens, Greece  
Ex president of the WG in Electrophysiology and Pacing of the Hellenic Cardiology Society





## International Congress on Electrophysiology 2025 ISHNE & ISE

May 30 - June 1 / 2025  
Electra Palace / Thessaloniki, Greece



### P R O G R A M M E

**Giannakoulas George**, MD, PhD  
Professor of Cardiology and Adult Congenital Heart Disease, Aristotle University of Thessaloniki, AHEPA Hospital, Cardiology Unit, Thessaloniki, Greece

**Giannopoulos Georgios**  
Asc Professor of Cardiology, 3rd Dept of Cardiology, School of Medicine, AUTH

**Gopinathannair Rakesh**, MD, MA, MBA, FAHA, FACC, FHRS  
Cardiac EP Lab Director, Kansas City Heart Rhythm Institute  
EP Medical Director, Research Medical Center  
Professor of Medicine, University of Missouri-Columbia

**Gorenk Bulent**, Professor, MD, FACC, FESC

**Grigoriadis Nikolaos**  
Professor, 2nd Department of Neurology, AHEPA University Hospital, Thessaloniki

**Hatzinikolaou -Kotsakou Eleni**  
Electrophysiologist-Interventional Cardiologist Saint Lukes Private Hospital Thessaloniki -GREECE

**Ikeda Takanori**  
Professor and Chairman, Department of Cardiovascular Medicine, Toho University Faculty of Medicine, Tokyo, Japan

**Ioannidis Panagiotis**, MD, PhD  
Cardiologist-Electrophysiologist, Director, Heart Rhythm Center, IASO Hospital

**Jadczyk Tomasz**, Assoc. Professor, MD PhD DSc

**Johnson Linda**, MD, PhD  
Associate Professor, Department of Clinical Sciences, Malmö, Lund University

**Johnston Samuel**, MD  
Clinical Assistant Professor, Dept of Internal Medicine I Division of Cardiology I Cardiac Electrophysiology, University of Iowa Hospitals & Clinics

**Juszczyk Maria**  
Medical Student, Karolinska Institute, World Society of Arrhythmias

**Kachrimanidis Ioannis**, MD, MSc, PhD(c)  
Cardiology resident, 1st cardiology dpt, NKUA

**Kaczmarek Krzysztof**, Professor M.D., Ph.D., FESC, FISHNE  
Chief of Electrophysiology Laboratory, Department of Electrocardiology, Rare Diseases Working Group, Central University Hospital, Medical University of Lodz, Poland

**Kalampokis Evaggelos**  
Assistant Professor, University of Macedonia

**Kanakakis Georgios Ioannis**  
Director of Cardiology, 3rd Clinic of Cardiology, Henry Dunant Hospital Center  
President of the Hellenic Society of Cardiology

**Karamanidou Christina**, PhD  
Health Psychologist, Researcher, Institute of Applied Biosciences, CERTH, Thessaloniki, Greece

**Karapanayiotides Theodoros**, MD, PhD, FESO  
Associate Professor of Neurology at the Aristotle University of Thessaloniki, Greece  
2nd Department of Neurology, School of Medicine Faculty of Health Sciences, Aristotle University of Thessaloniki  
AHEPA University Hospital

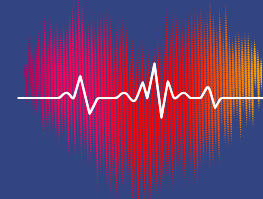
**Klingenheben Thomas**, Professor, M.D., FESC  
Interventional cardiology (DGK)  
Specialist genetic counselling (GenDG)  
Cardiology Practice Bonn, Germany

**Kochiadakis Georgios**  
Professor of Cardiology  
Cardiology Department, University Hospital of Heraklion, Crete

**Konstantinides Stavros**, MD, FESC, FRCP(Glasg)  
Professor of Cardiology, Democritus University of Thrace, Greece  
Professor, Clinical Trials, and Medical Director Center for Thrombosis and Hemostasis  
University Medical Center Mainz, Germany

**Konstantinidou Melanie**, Dr. MD  
Papageorgiou Hospital Cardiologist  
-Electrophysiologist

**Konstantinou Dimitrios**, MD, MSc, PhD, CCDS  
Consultant Cardiologist-Electrophysiologist, Clinical lead for Pacing and Cardiac Resynchronization Therapy, European Interbalkan Medical Center



## International Congress on Electrophysiology 2025 ISHNE & ISE

May 30 - June 1 / 2025  
Electra Palace / Thessaloniki, Greece



### P R O G R A M M E

**Kontogeorgis Andrianos**, M.D.  
CardioRhythm  
Cardiologist, Electrophysiologist and Paediatric Arrhythmologist, Thessaloniki

**Kourtellaris Pantelis**, M.D.  
Cardiologist and Electrophysiologist, American Medical Center

**Kousta Maria**, MD, MSc, PhD(c)  
Cardiologist - Electrophysiologist  
Evgenidion Clinic Agia Trias S.A.  
Member of EHRA Young EP Committee

**Krantz Mori**, MD FACC  
President, Colorado Chapter, American College of Cardiology, USA

**Kurpesa Malgorzata**, Prof. Dr. med., FESC  
Department of Cardiology, 1st Clinic of Medical University of Lodz, Department of Cardiac Rehabilitation

**Letsas Konstantinos**, MD, PhD, FESC, FEHRA  
Dep. Director, Arrhythmia Unit, Laboratory of Cardiac Electrophysiology  
Onassis Cardiac Surgery Center

**Leventopoulos Georgios**  
Assistant Professor in Cardiology - Electrophysiology, University Hospital of Patras

**Locati Emanuela Teresa**, MD, PhD  
Associate Professor  
Clinical Arrhythmology and Electrophysiology Department, IRCCS Policlinico San Donato, Milan Italy  
President Elect, International Society of Electrophysiology (ISE)

**Macfarlane Peter**  
Professor, School of Health and Wellbeing  
Electrocardiology Section

**Maglaveras Nicos**  
Professor. 2nd Department of Obstetrics and Gynecology, Aristotle University of Thessaloniki

**Makarov Leonid**, M.D., Ph.D. Professor  
Chief of Center for Syncope and Cardiac Arrhythmias of Federal Scientific Clinical Center for Children and Adolescents of Federal Medico Biological Agency. Mosocw, Russia

**Mantziari Lilian**, MD, MSc, PhD  
Head of Electrophysiology Department at InterBalkan Medical Center, Thessaloniki, Greece

**Maounis Themistoklis**, MD, FACC  
Board Certified Cardiologist- Electrophysiologist  
Henry Dunant Hospital Center

**Marketou Maria**, MD, PhD  
Associate Professor, University of Crete, School of Medicine, Cardiology Department, Heraklion University General Hospital, Crete, Greece

**Márquez Manlio**, Cardiologist-Electrophysiologist - American-British Cowdray Medical Center  
Deputy Director of Diagnostic and Treatment Services. National Institute of Cardiology Ignacio Chávez, Mexico City, Mexico  
President of the Mexican Board of Cardiology. Coordinator - Alliance Against Sudden Cardiac Death. - Inter-American Society of Cardiology

**Mavrakis Hercules**  
Consultant Electrophysiologist - University of Crete

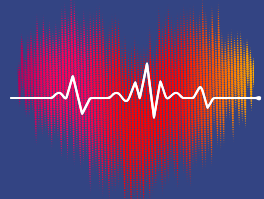
**Mavrogianni Aggeliki-Despina**  
Director, Head of Catheterization Laboratory at G. Papanikolaou General Hospital

**Michalis Lampros**, MD, PhD, FRCP, FESC  
Professor of Cardiology  
Faculty of Medicine, School of Health Sciences, University of Ioannina  
Director, 2nd Department of Cardiology, University Hospital of Ioannina

**Milovanovic Branislav**, MD, PhD  
Belgrade, Serbia, Professor, University of Belgrade, School of Medicine, Institute for cardiovascular diseases- Dedinje

**Neven Kars**, Professor, Dr. MD  
World Society of Arrhythmias

**Ng Jeremy Y**, Dr., MSc, PhD  
Research Associate, Institute of General Practice and Interprofessional Care, University Hospital Tübingen, Tübingen, Germany & Robert Bosch Center for Integrative Medicine and Health, Bosch Health Campus, Stuttgart, Germany  
Consultant, Capitalize for Kids, Toronto, Canada  
Editor-in-Chief, Journal of Complementary and Integrative Medicine



## International Congress on Electrophysiology 2025 ISHNE & ISE

May 30 - June 1 / 2025  
Electra Palace / Thessaloniki, Greece



### P R O G R A M M E

#### Oseroff Oscar, MD

Past President World Society of Arrhythmias

#### Oto Ali, Professor

Head of Cardiology Department, Memorial Ankara Hospital, Turkey, World Society of Arrhythmias

#### Pagourelas Efstathios, MD, MSc, PhD, FESC, FEACV

Assistant Professor in Cardiology/Echocardiography, Third Cardiology Department, Hippokrateion Hospital, Medical School, Aristotle University of Thessaloniki, Thessaloniki, Greece

#### Pang Trudy, MD, MMSc, Director, Clinical

Neurophysiology and Epilepsy Fellowship Programs, Director, EEG Laboratory, Director, Women's Health and Epilepsy Program, Assistant Professor of Neurology, Harvard Medical School, Beth Israel Deaconess Medical Center

#### Papadopoulos Christodoulos, MD, PhD, FESC

Associate Professor of Cardiology  
3rd Cardiology Department, Hippokrateio University Hospital, Aristotle University of Thessaloniki

#### Papaioannou Nikolaos

Professor, Deputy Minister for Higher Education, f. Rector of AUTH

#### Passman Rod

Director, Center for Arrhythmia Research, Jules J. Reingold Professor of Electrophysiology, USA

#### Pastromas Socrates

Ass. Director Electrophysiology & Pacing Department, Henry Dunant Hospital Center, Athens, Greece

#### Patrikios Ioannis

Professor of Medical Biochemistry, Immunology, Lipidology  
Deputy Dean, School of Medicine  
European University Cyprus

#### Piotrowicz Ewa, Prof., MD, PhD, FESC, FHFA

President of the Association of Noninvasive Electrophysiology and Telemedicine of the Polish Cardiac Society  
Head of Telecardiology Center, National Institute of Cardiology, Warsaw, Poland, World Society of Arrhythmias

#### Piotrowicz Ryszard, Professor MD, PhD

#### Platonov Pyotr, Professor

Senior Cardiology Consultant, Department of Cardiology, Clinical Sciences, Lund University, Lund, Sweden  
Arrhythmia Clinic, Skane University Hospital, Lund Sweden

#### Polymeropoulos Konstantinos, MD, PhD, FESC, FACC

Head of Arrhythmia and Electrophysiology, Cardiology Department, G. Papanikolaou Hospital, Thessaloniki

#### Potpara Tatiana, MD, PhD, FESC

Professor, School of Medicine, University of Belgrade, Serbia  
Head of Dept. for Intensive Arrhythmia Care, Cardiology Clinic, Clinical Center of Serbia

#### Psychari Stavroula, MD, PhD, FESC

Consultant Interventional Electrophysiologist, Nikea General Hospital, Athens, GR and Barts Heart Center, London, UK

#### Ribeiro Antonio Luiz Pinho, Professor

Internal Medicine, Fac. Medicina da UFMG  
Vice-Director, Innovation Center on Artificial Intelligence for Health (CIIA-Health) UFMG  
Member of the Science Committee, World Heart Federation  
Researcher, 1A level, CNPq. CV: <http://lattes.cnpq.br/8754335906813622>  
Associate Editor, Heart, BMJ journals; Section Editor, Journal of Electrophysiology

#### Rosman Lindsey, PhD, FAHA

Assistant Professor of Medicine - Division of Cardiology, University of North Carolina School of Medicine

#### Sasano Tetsuo, M.D. Ph.D.

Professor of Medicine, Department of Cardiovascular Medicine, Institute of Science Tokyo

#### Simantirakis Emmanuel, Professor

Department of Cardiology, University of Crete, Greece

#### Skoularigis Ioannis, MD, PhD

Professor of Cardiology University of Thessaly  
Director Cardiology Department - Larissa University Hospital

#### Stavrakis Stavros, MD, PhD, FACC, FESC, FHRS

Professor of Medicine, Vice Chief, Cardiovascular Section, Laureate Chair in Molecular Medicine, University of Oklahoma Health Sciences Center, USA



## International Congress on Electrophysiology 2025 ISHNE & ISE

May 30 - June 1 / 2025  
Electra Palace / Thessaloniki, Greece



### P R O G R A M M E

#### Stavropoulos Georgios, MD

Specialist in Cardiology  
Electrophysiologist, 2nd University Department of Craciology, Aristotle University of Thessaloniki

#### Streeter Jennifer, MD, PhD

Assistant Professor of Cardiovascular Medicine  
Invasive Cardiologist  
Director, Iowa Living Human Heart Research Program (ILHHRP)  
University of Iowa Carver College of Medicine, USA

#### Styliadis Ioannis, Dr.

Director Consultant Cardiologist at Papageorgiou General Hospital of Thessaloniki

#### Sutton Richard

Emeritus Professor of Clinical Cardiology, National Heart & Lung Institute, Imperial College, London, UK

#### Svennberg Ema

Associate Professor Karolinska Institutet, Karolinska University Hospital, Stockholm

#### Tachmatzidis Dimitrios, MD, PhD

Cardiologist, Clinical Reader, 3rd Department of Cardiology, Aristotle University of Thessaloniki

#### Takahashi Naohiko, MD, PhD

Oita University, JAPAN

#### Tereshchenko Larisa, MD, PhD, CCDS, FAHA,

FACC, FHRS, FSCT, FISHNE  
Associate Professor of Medicine, Cleveland Clinic.  
Department of Cardiovascular Medicine, Heart, Vascular & Thoracic Institute, Department of Quantitative Health Sciences, Lerner Research Institute  
Associate Professor of Medicine, Cleveland Clinic  
Lerner College of Medicine, of Case Western Reserve University, Department of Medicine.  
Adjunct Professor of Electrical Engineering and Computer Science, Cleveland State University  
College of Engineering

#### Tfelt-Hansen Jacob, Professor

University of Copenhagen, Department of Forensic Medicine

#### Theodorou Sophia, MSc

Psychologist, specialized in Health Psychology

#### Toutouzas Konstantinos

Professor of Cardiology, University of Athens, Greece

#### Trayanova Natalia, PhD

FNAI, FHRS, FAHA, FACC, FESC, FEHRA, FIAMBE, FBME, FAIME, FIUPS, FIEEE  
Murray B. Sachs Professor of Biomedical Engineering  
Professor of Medicine | Professor of Applied Math and Statistics  
Director, Alliance for Cardiovascular Diagnostic and Treatment innovation (ADVANCE)  
Director of AI Research in Health and Medicine, Data Science and AI Institute  
Johns Hopkins University

#### Triantafyllou Konstantinos

Cardiologist-Electrophysiologist. 3rd Cardiology Department, Aristotle University of Thessaloniki

#### Tsarouchas Anastasios

Internal Medicine Resident, First Department of Internal Medicine, Cardiology and Intensive Care, Landeskrankenhaus Mistelbach, Austria

#### Tse Gary, MD

Professor, Department of Health Sciences  
School of Nursing and Health Sciences  
Hong Kong Metropolitan University  
Hong Kong, China

#### Tsiachris Dimitrios

Assistant Professor of Cardiology, University of Athens Medical School  
EP Lab, Athens Medical Center

#### Tsioufis Konstantinos, MD, FESC, FACC

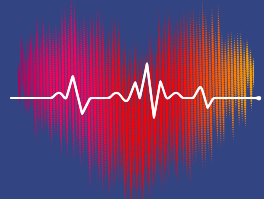
Professor of Cardiology, Director of the 1st Department of Cardiology, National and Kapodistrian University of Athens, Hippokration Hospital, Greece  
Vice Dean of the School of Medicine, University of Athens

#### Tzeis Stelios, MD, PhD, FEHRA

Consultant Cardiologist - Electrophysiologist  
Head of Cardiology Department  
Mitera Hospital, Hygeia Group  
EHRA Congress Scientific Programme Committee Chair (2025-2026)  
EHRA Board Member

#### Tzikas Apostolos, MD, PhD, FESC

Interventional Cardiologist  
Structural & Congenital Heart Disease, Hippokratio University Hospital, Aristotle University of Thessaloniki & European Interbalkan Medical Centre, Thessaloniki, Greece



## International Congress on Electrocardiology 2025 ISHNE & ISE

May 30 - June 1 / 2025  
Electra Palace / Thessaloniki, Greece



P R O G R A M M E

### Tzikas Stergios, MD, PhD, FESC

Associate Professor of Cardiology, 3rd Department of Cardiology, Ippokrateio Hospital, Aristotle University of Thessaloniki

### Vardas Panagiotis

Emeritus Professor of Cardiology, University of Crete Heart Sector, Hygeia Hospitals Group, HHG President of ESC (2012-2014)  
Deputy Editor European Heart Journal – Digital Health and Innovation

### Varma Niraj, Professor, MA, MD, PhD, FRCP

Director, Cardiac Pacing and Tachyarrhythmia Devices, Cleveland Clinic

### Vassilikos Vassilios, MD, FACC, FESC, ISHNE-F

Professor in Cardiology, Medical School, Aristotle University of Thessaloniki  
President ISHNE

### Yan Huo, MD, PhD

Department of Electrophysiology, Heart Center, Dresden University of Technology, Dresden, Germany

### Yiangou Kyriakos, MD, MSc, FESC, FACC, FEACVI

Cardiologist  
President, Cyprus Society of Cardiology

### Zaklyazminskaya Elena, Dr. M.D., Ph.D.

Head of Medical Genetics Laboratory,  
Petrovsky Russian Research Centre of Surgery,  
Moscow, Russia

### Zareba Wojciech, MD, PhD, FACC, FESC

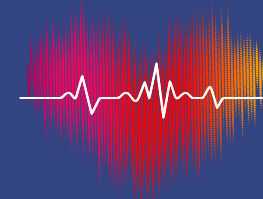
David Mortara Endowed Professor in Cardiology  
Professor of Medicine/Cardiology  
Cardiovascular Clinical Research Center  
Division of Cardiology  
University of Rochester Medical Center

### Zarifis Ioannis

Director, Cardiology Department, G. Papanikolaou Hospital, Thessaloniki, Greece

### Ziakas Antonios

Professor, Aristotle of University of Thessaloniki  
Interventional Cardiologist, AHEPA University Hospital, Thessaloniki, Greece



## International Congress on Electrocardiology 2025 ISHNE & ISE

May 30 - June 1 / 2025  
Electra Palace / Thessaloniki, Greece



P R O G R A M M E

## ACKNOWLEDGEMENTS

### SILVER PARTNERS



### BRONZE PARTNER



### SPONSORS





**International Congress  
on Electrocardiology 2025  
ISHNE & ISE**



TactiFlex™ Ablation Catheter,  
Sensor Enabled™

**ENHANCE TIP STABILITY** during  
ablation and directed irrigation flow to  
the tissue-tip interface for safe lesion  
formation.

Information contained herein intended for Healthcare Professionals ONLY. Not to be reproduced, distributed, or excerpted. This product may not be approved in all geographies, and may be undergoing investigational review. This product may be limited to regulatory requirements in your geography prior to placing on the market.

© 2022 Abbott. All rights reserved. MAT-2209883 v1.0 | Information contained herein intended for EMEA audiences only.



## Zero-Gravity®

Weightless Radiation Protection



[www.kalteq.com](http://www.kalteq.com)



SHOCKWAVE  
MEDICAL INC

## Intravascular Lithotripsy for Cardiovascular Calcium



Your Sound Calcium Strategy.

 **SOFMEDICA**  
LIFE SAVING INNOVATION

*Eliquis*<sup>®</sup>  
apixaban

Κάθε επικαλυμμένο με λεπτό υμένιο  
δισκίο περιέχει 2,5 mg ή 5 mg apixaban.



 **Pfizer**

Πριν τη συνταγογράφηση συμβουλευθείτε την Περίληψη  
Χαρακτηριστικών του Προϊόντος που διατίθεται από την εταιρεία.

**PFIZER ΕΛΛΑΣ Α.Ε.** Λεωφ. Μεσογείων 243, Ψυχικό 15451, Αθήνα, Ελλάδα,  
Τηλ. Επικοινωνίας 210 67 85 800, Αριθ. Γ.Ε.ΜΗ. 000242901000.

**PFIZER ΕΛΛΑΣ Α.Ε. (CYPRUS BRANCH)** Λεωφ. Αθαλάσσης 26, 2018,  
Λευκωσία, Κύπρος, Τηλ.: +357 22 817690.

Βοηθήστε να γίνουν τα φάρμακα πιο ασφαλή και  
ΑΝΑΦΕΡΕΤΕ ΟΛΕΣ τις ανεπιθύμητες ενέργειες για ΟΛΑ  
τα φάρμακα συμπληρώνοντας την "Κίτρινη Κάρτα"

PP-ELI-GRC-1109-FEB25





## Jardiance® (εμπαγλιφλοζίνη)

PG-GR-102202-Emna-03-2024

Για τις εγκεκριμένες ενδείξεις, τις ανεπιθύμητες ενέργειες, τις προειδοποιήσεις, τις αντενδείξεις, την δοσολογία και λοιπές ουσιαστικές πληροφορίες παρακαλούμε ανατρέξτε στην Περίληψη Χαρακτηριστικών του Προϊόντος.

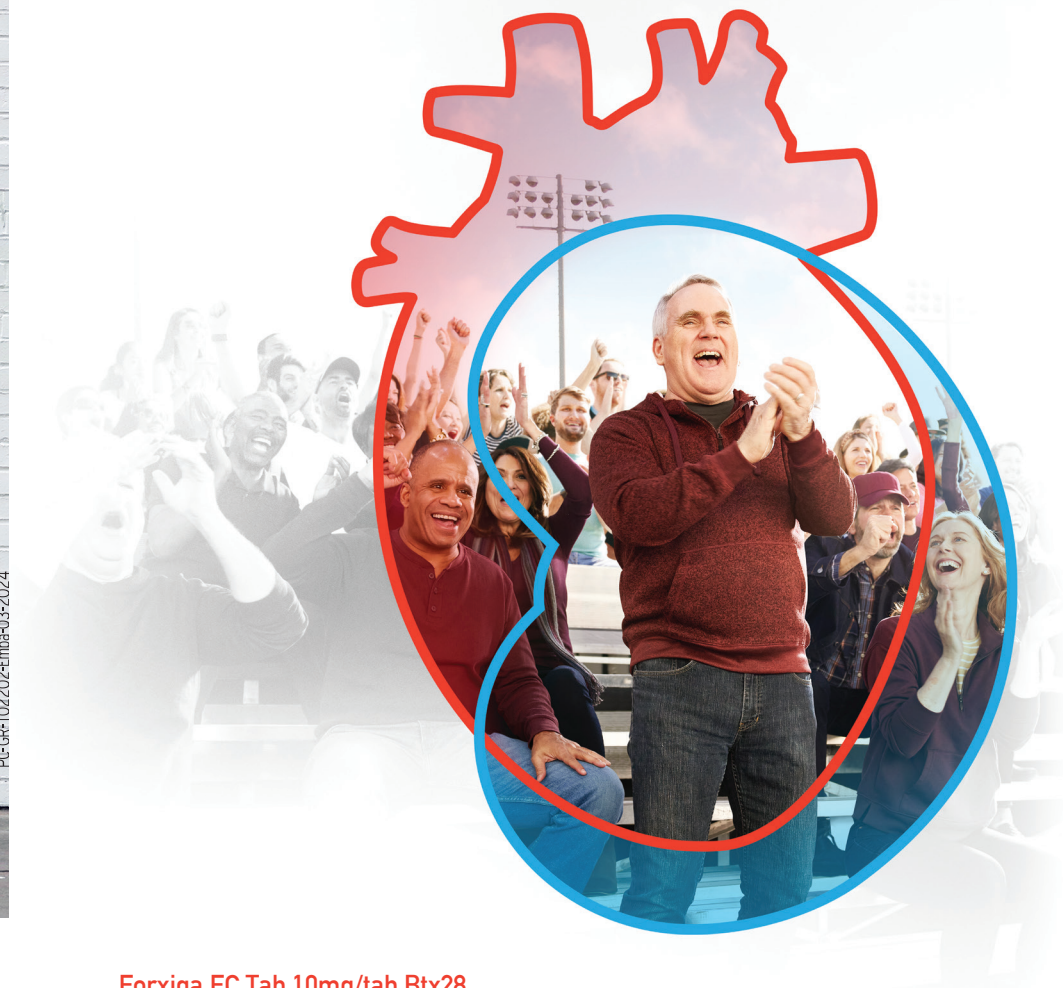
**ΚΑΤΟΧΟΣ ΤΗΣ ΑΔΕΙΑΣ ΚΥΚΛΟΦΟΡΙΑΣ:** Boehringer Ingelheim International GmbH, Binger Str. 173, D-55216 Ingelheim am Rhein, Γερμανία. **ΑΡΙΘΜΟΣ(ΟΙ) ΑΔΕΙΑΣ ΚΥΚΛΟΦΟΡΙΑΣ:** Jardiance 10 mg επικαλυμμένα με λεπτό υμένιο δισκία: EU/1/14/930/010-018. Jardiance 25 mg επικαλυμμένα με λεπτό υμένιο δισκία: EU/1/14/930/001-009. **ΗΜΕΡ/ΝΙΑ ΠΡΩΤΗΣ ΕΓΚΡΙΣΗΣ:** 22 Μαΐου 2014, **ΗΜΕΡ/ΝΙΑ ΑΝΑΝΕΩΣΗΣ ΤΗΣ ΑΔΕΙΑΣ:** 14 Φεβρουαρίου 2019. **ΗΜΕΡΟΜΗΝΙΑ ΑΝΑΘΕΩΡΗΣΗΣ ΤΟΥ ΚΕΙΜΕΝΟΥ:** 24 Ιουλίου 2023. **ΤΙΜΕΣ:** Τιμές Ελλάδας: Jardiance 10 mg επικαλυμμένα με λεπτό υμένιο δισκία: Χ.Τ.: 34,97€, Ν.Τ.: 30,43€, Λ.Τ.: 48,19€. Jardiance 25 mg επικαλυμμένα με λεπτό υμένιο δισκία: Χ.Τ.: 34,97€, Ν.Τ.: 30,43€, Λ.Τ.: 48,19€. Τιμές Κύπρου: Jardiance 10 mg επικαλυμμένα με λεπτό υμένιο δισκία: Λ.Τ. (ΜΕΓΙΣΤΗ ΔΥΝΑΤΗ): 55,08€. Jardiance 25 mg επικαλυμμένα με λεπτό υμένιο δισκία: Λ.Τ. (ΜΕΓΙΣΤΗ ΔΥΝΑΤΗ): 55,40€. ΧΟΡΗΓΕΙΤΑΙ ΜΕ ΙΑΤΡΙΚΗ ΣΥΝΤΑΓΗ.

Βοηθήστε να γίνουν τα φάρμακα πιο ασφαλή και  
Αναφέρετε ΌΛΕΣ τις ανεπιθύμητες ενέργειες  
για ΌΛΑ τα φάρμακα  
Συμπληρώνοντας την  
“ΚΙΤΡΙΝΗ ΚΑΡΤΑ”



Boehringer Ingelheim Ελλάς Μονοπρόσωπη Α.Ε., Λεωφ. Ανδρέα Συγγρού 340, 17673, Καλλιθέα. Τηλ.: 210 89 06 300.  
Γραφείο Μακεδονίας - Θράκης: Αντώνη Τρίτση 15-17 & Μαρία Κάλλας 6, Πυλαία, 570 01 Θεσσαλονίκη. Τηλ.: 2310 424 618  
E-mail: info@ath.boehringer-ingelheim.com  
Τοπικός Αντιπρόσωπος του Κ.Α.Κ. στην Κύπρο: CPO Ltd, Βασ. Παύλου Α' 11, 1096 Λευκωσία, Κύπρος. Τηλ.: +357 22 863100.

**forxiga**  
(dapagliflozin)



### Forxiga F.C.Tab 10mg/tab Btx28

Κάθε δισκίο περιέχει μονοϋδρική δαπαγλιφλοζίνη με προπανοδιόλη ισοδύναμη με 10 mg δαπαγλιφλοζίνης.  
Έκδοχο με γνωστή δράση:  
Κάθε δισκίο περιέχει 50 mg λακτόζης.  
Φαρμακευτικό προϊόν για το οποίο απαιτείται ιατρική συνταγή.

Για την Περίληψη Χαρακτηριστικών του Προϊόντος  
σκανάρετε το παρακάτω QR Code



Σε περίπτωση που επιθυμείτε την έντυπη ΠΧΠ του προϊόντος, ζητήστε  
την από την γραμματεία του συνεδρίου ή από το stand της AstraZeneca

**AstraZeneca**

AstraZeneca A.E.,  
Αιγυπιάδου 6-8, 151 23 Μαρούσι, Αθήνα  
Τηλ.: 210 6871500  
Αρ. Γ.Ε.ΜΗ. 000638901000  
www.astrazeneca.gr

Βοηθήστε να γίνουν τα φάρμακα πιο ασφαλή και Αναφέρετε:  
ΌΛΕΣ τις ανεπιθύμητες ενέργειες για ΌΛΑ τα φάρμακα  
Συμπληρώνοντας την «ΚΙΤΡΙΝΗ ΚΑΡΤΑ»

Forxiga F.C.Tab 10mg/tab Btx28  
Λ.Τ.: 43,03€, Χ.Τ.: 31,22€, Ν.Τ.: 27,17€